



**one of the
greatest years
in our history**

a milestone year for us,

**a new future for the children
who need us.** Day after day, Children's
Specialized is home to the very best of the human spirit.
You can see it in the compassion and expertise of our
people and in the bravery of our young patients and
their families.

It is impossible to spend even an hour here and not be moved by the triumphs and miraculous moments that unfold all around you. The tiny baby born, three months prematurely, learning to breathe independently and thrive. The pig-tailed pixie, just diagnosed with cerebral palsy, receiving the therapies, medical care, and love that will help her spread her wings and fly. The high-school wrestler, felled by a traumatic brain injury, boldly reclaiming the ability to talk, walk, and live his life again.

Thousands of stories like these are what make ours a proud history—and will forever mark 2007 as a milestone. For this is the year we made more of those stories possible for more kids and families who will need us, through our expansion and the opening of the new Children's Specialized Hospital–New Brunswick.

For the people of New Jersey, the Northeast, and beyond, an exciting new era in pediatric healthcare has begun—one that brings the incredible people of Children's Specialized Hospital even closer to the thousands of children who need us.

dear friends:

Our 2007 annual report reflects the incredible recent achievements of Children's Specialized Hospital. It was an exciting year, one in which we saw firsthand the power of change and began a remarkable new chapter in providing the highest quality of healthcare for children and their families.

In December, we opened our newest site, PSE&G Children's Specialized Hospital, a 60-bed inpatient rehabilitation hospital in New Brunswick. Adjacent to the Bristol-Myers Squibb Children's Hospital at Robert Wood Johnson University Hospital and the Child Health Institute at the University of Medicine and Dentistry of New Jersey, our opening marks the first time ever that New Jersey children have access to acute care, research, and rehabilitation on one campus.

As the hub of our 11-facility network, this new hospital not only enhances our inpatient capabilities, it also empowers us to offer even better outpatient services at dedicated neighborhood locations throughout New Jersey. This year, we provided comprehensive, family-centered care to 16,000 children with special needs.

We are also proud of our recognition as one of the state's Best Places to Work, according to NJBIZ. This award, the second consecutive for our organization, is supported by employee surveys and is a reflection of how we live our corporate values every day.

Our deepest appreciation is extended to the entire Children's Specialized family—our Hospital and Foundation Boards of Trustees, volunteers, Auxilians, donors, and staff—for the hard work, dedication, and commitment they show for our children. It is an honor to acknowledge the many people whose efforts make this hospital a truly special place, each and every day.

We look forward to sharing many more exciting developments, and the inevitable inspiring stories of change and growth, in 2008 and beyond.

Sincerely,



Barbara Rothman
Chairwoman, Board of Trustees
Children's Specialized Hospital

Amy B. Mansue
President and Chief Executive Officer
Children's Specialized Hospital



hospital board of trustees

Barbara Rothman, Chairwoman
 Amy B. Mansue, President and CEO
 Dennis M. Bushe, Ph.D., Past Chairman
 Sister Jane Frances Brady, First Vice Chairwoman
 Saverio Garruto, CPA, Second Vice Chairman
 Suzanne D. Korn, Treasurer
 David Kostinas, Secretary
 Frank V. Castello, M.D., Medical Director
 Arvind Shah, M.D., Medical Staff President
 Philip Salerno III, Foundation President & CDO
 Nancy Kazanecki, Assistant Secretary
 Bonnie Baloga-Altieri
 Christopher R. Belden
 Sally Brown
 Scott Chesney

Nancy Durant, M.D.
 Terrence Farley, M.D.
 John J. Gantner
 Alexander R. Giaquinto, Ph.D.
 Andrew Greene
 Elizabeth Hance
 Jean McDermott
 W. Peter Metz
 Glenn Mortimer
 Daniel Notterman, M.D.
 William Reichman, M.D.
 Gail Sloan
 Deborah Spitalnik, Ph.D.
 Robin A. Walton
 Patricia Whitley-Williams, M.D.

honorary trustees

John R. Blasi, Esq.
 Raul E. Cesan
 John J. Dalton
 Donald T. Di Francesco, Esq.
 Robert L. Duncan
 John W. Fox
 Anita M. Kneeley
 Van William Knox III*
 Marilyn Kolterjahn
 William D. Peek
 Monsignor Raymond Pollard
 Helen B. Talcott
 Robert R. White III, M.D.

*deceased

We warmly remember our friend Van William "Squire" Knox III, a former chairman of the hospital board, whose tenure during our centennial celebration saw the opening of our long-term care center and new outpatient facility. It was because of Squire that our 30-year partnership with Schering-Plough first began. His sense of humor and vision are greatly missed.



foundation board of trustees

Alexander R. Giaquinto, Ph.D., Chairman
Kenneth Goldman, Vice Chairman
Thomas Koestler, Ph.D., Vice Chairman
Nicholas A. Boccella, Treasurer
Anita Siegel, Esq., Secretary
Philip Salerno III, President and CDO
Joseph J. Dobosh, Jr., Assistant Treasurer
Linda J. Stevens, Assistant Secretary
Todd E. Bauer
John P. Boyle, III
Judith Burgis
Frank V. Castello, M.D.
John Crisan, Esq.
John A. DeFord, Ph.D.
Rodney Dickens

Susan Doherty
Andrea Forrester
Philip Galli
Paul Graves
Michele Hall-Duncan
Paul R. Lamb
Joseph Lamendola, Ph.D.
Michael Lewis, Ph.D.
Amy B. Mansue
W. Peter Metz
Jeffrey Rosen
Barbara Rothman
James Rutherford
Leslie Taylor

emeritus trustees

Paul C. Bosland, Chairman Emeritus
Hetsy McCoy
Louis Parent

honorary trustee

Frank Vuono

dear friends:

Raising funds to support the mission of this incredible hospital has been our focus and passion for more than 20 years. Along the way we have conquered many challenges, yet none more important—or more daunting—than achieving the ambitious Phase One goals of our recent capital campaign, *The Building Begins with Children*.

We initially hoped to raise \$20 million to help fund construction of the new PSE&G Children's Specialized Hospital. By the project's completion in late 2007, our total exceeded \$33 million. That included a \$1 million challenge grant from the nationally respected Kresge Foundation, awarded for reaching our total campaign goal before their September 2007 deadline.

The true legacy of this campaign, however, is not in the money raised, but in the stories behind each of the 3,700 who gave. It is also in the successes of new initiatives, like our first walk-a-thon and a telephone outreach campaign. And it is in the strength of our relationships, as seen in the commitment of PSE&G and its employees, whose personal involvement enriches our work. On the following pages, we recognize those friends whose support made this first goal possible.

We strive to ensure that every one of our patients has access to the best services and care in the country. The compassion of our donors and strength of our Foundation puts that goal well within our reach. This year, our Foundation was named among the top 20 non-profit organizations in the state by NJBIZ magazine.

On behalf of the Foundation Board of Trustees, and with the Hospital Board of Trustees and senior leadership team, we thank you for your confidence in us, your belief in our mission, and your continued support. We are truly humbled by your generosity.

Sincerely,



Alexander R. Giaquinto, Ph.D.
Chairman, Board of Trustees
Children's Specialized Hospital Foundation

Philip Salerno III
President and Chief Development Officer
Children's Specialized Hospital Foundation

the hospital

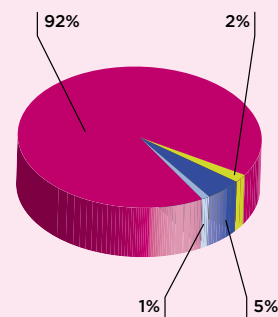
statement of revenues and expenses

CHILDREN'S SPECIALIZED HOSPITAL

Year Ended December 31, 2007 (in thousands of dollars)

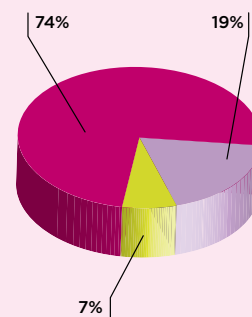
Hospital Revenues

Patient Service Revenue	82,561	
Subsidy from Foundation	2,000	
Other Operating Revenue	3,842	
Total Operating Revenue	88,403	
Investment Income	1,210	
Total Revenue	89,613	



Hospital Expenses

Salaries & Benefits	64,893	
Other Services & Supplies	17,057	
Depreciation, Interest, & Unreimbursed Services	6,136	
Total Expenses	88,086	



Patients Served in 2007

Inpatient & Long Term Care Services	451
Outpatient Services	15,549
Total	16,000

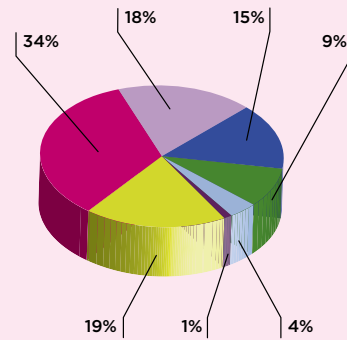
the foundation

statement of revenues and expenses



CHILDREN'S SPECIALIZED HOSPITAL FOUNDATION
Year Ended December 31, 2007 (in thousands of dollars)

Foundation Revenues

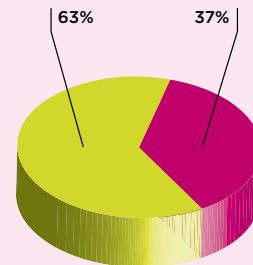
Bequests	1,712	
Capital Campaign	3,078	
Voluntary Gifts	1,603	
Investment Income	1,384	
Contributions from Children's Miracle Network	872	
Special Events (net)	388	
Direct Mail & Tributes	69	
Total Revenue	9,106	



Foundation Expenses

Salaries & Benefits	712	
Other Services & Supplies	427	
Total Expenses	1,139	

The fund-raising ratio equals 12.5%.



How Each Gift Was Designated

Capital Campaign	47%
General Support & Charity Care	38%
Therapies & Programs	7%
Education & Outreach	5%
Equipment	2%
Medical Services	1%

accolades

- * Each year, *New Jersey Monthly* magazine publishes its list of Top Doctors in the state. This group represents the top 2% of New Jersey physicians. We are proud of the extraordinary work of our doctors listed among them:

Martin Diamond, M.D. Uday C. Mehta, M.D.
Yvette M. Janvier, M.D. Michael J. Armento, M.D.

- * Members of the medical staff were also ranked among America's Best Doctors in the Guide to America's Top Pediatricians:

Frank V. Castello, M.D. Michele Fantasia, M.D.
Uday C. Mehta, M.D. Janice Pronnicki, M.D.
Michael J. Armento, M.D.

- * The hospital was recognized by NJBIZ magazine for the second consecutive year as one of the Best Places to Work in New Jersey.



- * For 2006-2007, Children's Specialized was named among one of the region's top 10 children's hospitals by *New York* magazine. This honor reflects the confidence of 1,500 physicians, who voted based on where they would send their own children for care.





senior leadership

Amy B. Mansue President and CEO

Warren Moore Executive Vice President and COO

Frank V. Castello, M.D. Medical Director

Karen DeWitt, Ed.D., R.N., CNAA Vice President, Patient Care

Joseph J. Dobosh, Jr. Vice President and CFO

Michael Dribbon, Ph.D. Vice President, Rehabilitation Services and Program Development

William Dwyer Vice President, Human Resources

Philip Salerno III Foundation President and CDO

medical staff

Frank V. Castello, M.D. Medical Director; Pediatrics/Pediatric Critical Care

Kishan C. Agarwal, M.D. Pediatric Cardiology

Michael J. Armento, M.D. Physiatry

Adam Aronsky, M.D. Pediatrics

Ileana Bernal, M.D. Pediatric/Adolescent Psychiatry

Sharon A. Burke, M.D. Pediatrics/Neonatology

JenFu Cheng, M.D. Pediatric Physiatry

Martin Diamond, M.D. Pediatric Physiatry

Elvira Downs, M.D. Psychiatry

Nancy A. Durant, M.D. Psychiatry

Michele Fantasia, M.D. Pediatrics & Physiatry

Ave Gozo, M.D. Pediatrics

Brenda Harris, M.D. Neurodevelopmental Pediatrics

Yvette M. Janvier, M.D. Developmental/Behavioral Pediatrics

Lawrence Laveman, M.D. Developmental/Behavioral Pediatrics

Zeenat Malik, M.D. Neurodevelopmental Pediatrics

Rose Mary Merola, M.D. Developmental/Behavioral Pediatrics

Uday C. Mehta, M.D. Developmental/Behavioral Pediatrics

Janice Pronnicki, M.D. Neurodevelopmental Pediatrics

Tehsin R. Qudsi, M.D. Pediatrics

Thomas Rugino, M.D. Neurodevelopmental Pediatrics & Physiatry

Arvind P. Shah, M.D. Pediatrics

Philip J. Therrien, M.D. Orthopedics

Eveline Traeger, M.D. Pediatric Neurology

Marina Velickovic, M.D. Pediatrics

Krishan C. Yalamanchi, M.D. Pediatrics/Neurodevelopmental Disabilities

Erin Acosta, CFNP

Lauren Blann, CPNP

Janine DeFeo, CPNP

Margaret Freeman, CPNP

Lori Ioriatti, CPNP

Rebecca Lau, CPNP

Christine Sanpietro, CPNP

Vincent Yacono, CPNP

a new e

PSE&G Children's



era

begins.

PSE&G Children's Specialized Hospital -New Brunswick

The idea to build a state-of-the-art inpatient center was born in 2001, when the Hospital and Foundation Boards of Trustees met to address the changing needs of our hospital system. They envisioned a hub-and-spoke strategy

that could bring the very best treatment to more children and families in the region. A comprehensive inpatient center, located in the heart of the state, would provide the compassionate, quality rehabilitation care Children's Specialized is known for. Outpatient services, our medical day care, and a long-term care program would be offered at neighborhood sites strategically located throughout New Jersey.

In December 2007, six years of commitment and skillful planning came to fruition as the new PSE&G Children's Specialized Hospital officially opened in New Brunswick—on budget, and five months ahead of schedule. Its physical connection to the Bristol-Myers Squibb Children's Hospital at Robert Wood Johnson University Hospital, and the Child Health Institute at the University of Medicine and Dentistry of New Jersey, marked the first time that acute care, research, and pediatric rehabilitation could be found in one location. The result is a comprehensive pediatric campus unlike any in the region—and few in the nation.

In some very important ways, 2007 will be remembered like the previous 115 years in our history—for the bravery, spirit, and miraculous achievements of our children, and the inspiring talents, commitment, and compassion of our staff. But 2007 will also be remembered as the start of an exciting new chapter for Children's Specialized, one in which we ushered in a new era of pediatric healthcare for New Jersey.



18 months of planning before we made a single move.

We formed a multidisciplinary team of talented people from every level of our organization. Together, they undertook the critical process of ensuring each child would be safe, secure, and comfortable during the transition. **Our children mean everything to us, so every minute detail of the move was meticulously choreographed—and ultimately performed to perfection.**

“ the looks on their faces said everything. It is worth it! ”

—Kerry Ellmer,
Family Faculty



Moving is never easy, but for the 46 children and their families who transferred from Mountainside to New Brunswick, their new home made it all worthwhile. Family tours had given everyone a taste of the improvements awaiting them and transformed uncertainty into enthusiasm and excitement.

Over two busy December days, an amazing team of staff, volunteers, and Family Faculty worked tirelessly to ensure a comfortable transition for patients and families.

Each child was transferred to New Brunswick via ambulance, joined by a parent or caregiver for reassurance and comfort. On arrival, each received a warm personal greeting from staff and volunteers, who helped them check in, get a feel for their surroundings, and settle in to their comfortable new rooms. Employees from PSE&G helped in a huge way. They carefully packed up patients' rooms in Mountainside, greeted families as they arrived in New Brunswick, and helped them unpack and get comfortable in their new home.

The days were a whirlwind of motion and excitement, but therapy sessions resumed without missing a beat. In fact, some kids had therapy less than two hours after coming through the door.

Staff worked literally around the clock to make every child—and every family—feel at home. “When parents came in and saw this beautiful, warm, spacious new hospital, where their child would be able to recover and rehabilitate, the looks on their faces said everything. It is worth it!” - Kerry Ellmer, Family Faculty

a very
moving day



a quick tour

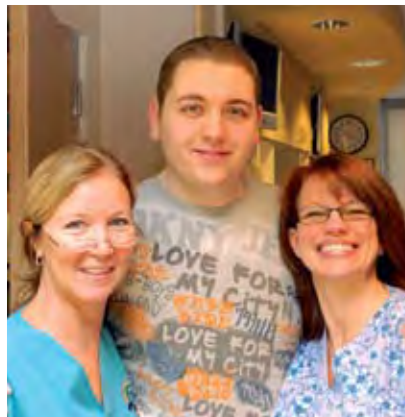
Enter the front doors, and you're greeted by a large entrance lobby and massive staircase, which are sometimes filled with wonderful aromas from the café downstairs. Continue farther on that level, and you'll encounter a meditation chapel, interactive gallery, an education resources library, therapy areas that include a large gym, and staff offices. An outdoor therapy garden completes this floor, which connects to both the Bristol-Myers Squibb Children's Hospital and the Child Health Institute.

of an amazing facility.



Head to the second and third floors

One houses infants and toddlers, and the other, adolescents and young adults—and you'll discover 30 beds on each, typically in semi-private rooms. Each patient bed area has its own flat-screen TV, game system, and family sleep accommodations. We gave each patient floor its own age-appropriate amenities, such as game rooms, playrooms, and a teen lounge, as well as dining spaces, classrooms, therapy areas, and offices. Each floor also has its own family lounge and kitchen, to make friends and family as comfortable as possible.



dedication day, December 19, 2007

Together with 300 friends from around the state, we officially dedicated PSE&G Children's Specialized Hospital in New Brunswick two weeks before New Year's. The day marked the beginning of a new future for children and families who need us.

Patients, their families, and guests stayed for a memorable holiday party, hosted by new neighbors Magyar Bank and radio station Magic 98.3. A holiday toy drive sponsored by the bank and the radio station brought in more than 500 toys, donated by generous community members. Every patient of PSE&G Children's Specialized Hospital left with a gift and a big smile.

The typical "ribbon cutting" was replaced by something every child enjoyed far more—a "cake cutting." The bakery team from the Food Network's *Ace of Cakes* show created the unique and delicious cake, which featured a replica of the hospital.



TLC for VIPs

special events

In the days before our official opening, several events attracted over 850 special guests to the new facility. These included a dinner enjoyed by referring physicians and clinicians, a heartwarming open house for hospital employees and the construction workers who built the hospital, and a reception for the trustees and donors whose gifts made it all possible.



Michael O'Brien, of Ocean First Foundation, and Sy Bressler, of Bedersen. The sparkling mobile that hangs in the lobby is a gift from the Hinckley Family Charitable Trust.



Former patient Melissa Ellmer tries her hand at the jumbo Operation Game during the Open House.



Alan and Penny Blake



Members of the New Jersey Kiwanis gather in the therapy gym named for the statewide organization's pledge of \$500,000.

transforming

Just as the opening of this hospital has changed healthcare for kids, so, too, has the success of **The Building Begins with Children** campaign changed philanthropy for our Foundation.



Barry and Star Tobias, with their daughters Jennifer and Michelle, in the playroom named for the family's personal gift to the campaign.

Among the first of our campaign conversations was one with Barry Tobias, treasurer of The Peter Jay Sharp Foundation. Barry's relationship with Children's Specialized began humbly, when he delivered blankets, handmade by volunteers through Project Linus. Soon after, The Peter Jay Sharp Foundation supported a new playground in Mountainside and medical services in our day-care center in Roselle Park.

Early on, Barry saw tremendous merit in the construction project but gave us one very clear direction: to come back and see him when we had the strong support of other donors.

One year later, we returned to Barry with success. PSE&G, the state's largest public utility, was looking to create a signature partnership that would reflect its commitment to children and families across the state. And they had chosen Children's Specialized Hospital.

The company's \$5 million gift of confidence, certainly the largest received by our organization, was also the largest donation in its history.

In light of this leadership gift, Barry presented to Norman Peck and the other directors of The Peter Jay Sharp Foundation a proposal for a \$3 million multiyear capital commitment. The proposal was unanimously approved. In recognition of this gift, Children's Specialized Hospital would name the auditoriums and pre-function space in New Brunswick, as well as the Long Term Care center at our hospital in Mountainside. It was a transformative gift, and the promise of it inspired our campaign early on.

More than 3,700 donors followed the lead of PSE&G and The Peter Jay Sharp Foundation, including Children's Miracle Network and a donor who has requested anonymity.

philanthropy

pulling out all the stops

And when the prestigious and nationally renowned Kresge Foundation announced its deadline for an “all or nothing” challenge grant, our Foundation pulled out all the stops.

In May, Kohl's Department Stores sponsored our first Walk n' Roll as part of its annual donation through the Kohl's Cares for Kids program—totaling \$400,000 for the year. More than 440 people descended on nearby Johnson Park, where they walked, rolled, and proudly raised \$38,000 toward our new building.

Our first telephone outreach campaign, held in the spring, raised \$460,000 and led to an additional \$600,000 in gifts. The effort introduced our cause to many generous first-time supporters.

Traditional fund-raisers contributed mightily to the cause as well. The annual Golf Classic and Golf Invitational outings raised a combined \$185,000. The 20th anniversary Umbrella Gala, held at the Hyatt Hotel in New Brunswick to celebrate our arrival to the neighborhood, generated an additional \$270,000.

In the end, we met the Kresge Foundation's ambitious deadline and received an additional \$1 million gift toward the campaign.



Golf Classic Committee



Gail and Tom Sloan at the Umbrella Gala



Golf Invitational Committee



Teens from Friday Night Fever at the Kohl's Walk n' Roll

humanitarian

18th Annual Golf Classic *
 15th Annual Golf Invitational *
 20th Annual Umbrella Gala *
 Walk n' Roll *
 Anonymous *
 Anonymous *
 BASF Corporation (Engelhard Corporation) *
 Mr. and Mrs. Alan J. Blake *
 Nicholas J. and Anna K. Bouras Foundation *
 C. R. Bard, Inc. *
 Children's Miracle Network *
 Children's Specialized Hospital Auxiliary *
 Estate of Halys G. Edwardsen * †
 Estate of Ralph G. Geiger * †
 Golden Touch Imports *
 Estate of Marion S. Gore * †
 Scott Hazelcorn Children's Foundation *
 Johnson & Johnson Family of Companies *
 NJ District of Kiwanis International *
 Kohl's Department Stores
 Kresge Foundation *
 Mr. W. Peter Metz and Ms. Louise Sydnor
 Estate of Raymond Overland * †
 Estate of Georgiana Pollak * †
 PSEG Foundation *
 Robert R. McCormick Tribune Foundation
 Schering-Plough Foundation *
 Estate of Marjorie Shaffer * †
 The Peter Jay Sharp Foundation *
 The Edward W. & Stella C. Van Houten
 Memorial Fund * †
 Louise Washington Trust * †
 Elizabeth M. Wintermute Trust * †
 Mr. and Mrs. Albert Yu *

founder

Anonymous *
 Mr. and Mrs. Raphael Beresford *
 Mr. Paul C. Bosland *
 The Connell Company *
 Mr. and Mrs. John T. Crisan, Esq. *
 The Frances L. & Edwin L. Cummings
 Memorial Fund * †
 Estate of Ernest N. Day * †
 Dr. and Mrs. John A. DeFord *
 Mr. and Mrs. Jeffrey Fischer *
 Bruce and Melissa Fischer Family Foundation Trust *
 Dr. and Mrs. Alexander R. Giaquinto *
 Estate of Adelaide L. Hinckley * †
 The Integra Foundation, Inc. *
 Ms. Amy B. Mansue *
 New Jersey District Key Club
 Fannie E. Rippel Foundation *
 Mr. and Mrs. James R. Rutherford *
 Starlight Children's Foundation NY-NJ-CT Chapter
 The Stone Family Fund
 Summit Area Public Foundation
 Mr. and Mrs. Barry S. Tobias *
 Mrs. Sally W. Turrell * †

cornerstone

Anonymous *
 Anonymous
 Arnold Steel Co., Inc.
 Astellas USA Foundation/Yamanouchi
 Pharma America Inc. *
 Mr. and Mrs. Joseph E. Atencio *
 Baird Family Fund *
 Mr. and Mrs. Nicholas A. Boccella *
 Ms. Linnea Bristol
 Bristol-Myers Squibb Company *
 Chubb & Son, Inc. *
 Mr. Michael Chuisano
 Mr. Gregory Cote *
 Ms. Leona Deliberato *
 Deloitte & Touche LLP
 The Max & Victoria Dreyfus Foundation Inc. *
 Mr. and Mrs. Terrence M. Farley *
 Ferreira Trucking Company, Inc.
 Estate of Angelo Fiorito * †
 Football Coaches Assoc., Greater Middlesex
 Conference
 Mr. and Mrs. John W. Fox *
 Futures & Options For Kids *
 Granary Associates
 E.J. Grassmann Trust *
 Mr. and Mrs. James Hance *
 Gladys and Roland Harriman Foundation
 Michael Harrison, Esq. *
 HRH
 Investors Savings Bank Charitable Foundation *
 JPMorgan Securities, Inc.
 Karma Foundation *

we have
 greatest
 in the

builder

Kids Helping Kids, Inc. *
 Kiwanis Foundation, Inc. Holmdel *
 Mr. and Mrs. Van Villiam Knox, III * †
 Dr. and Mrs. Thomas Koestler *
 Mr. and Mrs. David G. Kostinas *
 The Ingrid Mahan Foundation
 Melillo Consulting Inc.
 Ruth & Peter Metz Family Foundation, Inc. *
 NJ Coalition for Autism Awareness
 Northern Trust Charitable Giving Program
 Mr. and Mrs. Nicholas J. Paola *
 Pfizer Inc.
 C. Northrop & A. Marder Pond Foundation *
 Provident Bank Foundation *
 Christopher Reeve Paralysis Foundation
 Joseph Rosen Foundation
 Mr. and Mrs. Steven M. Rosenberg
 Ms. Barbara S. Rothman *
 Fred C. Rummel Foundation *
 ShopRite LPGA Classic/Wakefern Corporation *
 Anita J. Siegel, Esq. *
 Spirit Delivery and Distribution Services, Inc. *
 Standish Foundation
 Toms River Elks Lodge #1875
 Henry S. & Agnes M. Truzack Foundation *
 The Lucy & Eleanor S. Upton Charitable Foundation
 Wheelchair Sports Council of New Jersey
 Mr. and Mrs. Tim While *
 The Willits Foundation *

Ms. Charlotte A. Abell *
 Anonymous *
 Atlantic Neurosurgical Specialists, P.A.
 Mr. and Mrs. Todd E. Bauer *
 Better Sleep, Inc.
 BluePrint Information Strategies, LLC
 Mr. and Mrs. David G. Bunting *
 Estate of Mildred Burg * †
 Mr. and Mrs. Michael G. Carlin *
 Mr. and Mrs. Charles Carr *
 Frank V. Castello, M.D. and Ms. Carol Novinson *
 Chatham High School *
 Mr. and Mrs. Thomas A. Clark
 Mr. and Mrs. William Collins Jr. *
 Commerce Bank
 Sara De Coursey Trust * †
 Mr. William E. Dolan
 Mr. Doug Fontenello
 Fred Alger & Company, Incorporated
 Friendly Sons of St. Patrick of Union County
 Mr. and Mrs. Barry M. Gross
 Mr. and Mrs. John Hess *
 HKS Architects, P.C.
 Mr. Eric R. Jensen
 Mr. and Mrs. Stephen K. Jones *
 Mr. and Mrs. Thomas M. Kay *
 Peter R. & Cynthia K. Kellogg Foundation *
 Lacey Elks B.P.O.E. #2518
 Mrs. Leigh Levitt
 Lindabury, McCormick, Estabrook & Cooper
 Catherine Maloney Foundation, Inc.
 Members Handicapped Childrens Fund, Inc. *

Merck Company Foundation *
 Paul Miller Auto Group
 Mr. and Mrs. G. Dewey Moser *
 Mr. Robert Napolitano
 NYSE, Inc.
 Mr. and Mrs. James M. O'Brien
 OceanFirst Foundation
 Ortho Biotech Products, L.P. *
 Mr. and Mrs. Louis N. Parent
 Mr. William J. Parks
 The Patchett Foundation, Inc.
 PNC Foundation
 Port Authority of NY & NJ
 Mr. Glenn Potolsky
 Mr. and Mrs. Jerome Potter *
 Robert Wood Johnson University Hospital
 Robert Wood Johnson University Hospital at Hamilton
 Mr. and Mrs. Steven M. Rosenberg *
 Mr. Philip Salerno III and Dr. Mary T. Fitzgerald *
 Scholes Electric & Communications
 Mr. Paul Shapiro
 Mr. and Mrs. Donald P. Sharkey
 Mr. and Mrs. Thomas D. Sloan *
 Mr. and Mrs. Geoffrey E. Snyder
 Mr. and Mrs. Jen Teh Song
 Mr. and Mrs. Joseph W. Spada *
 Mr. and Mrs. Kirk C. Tice
 Tyler Foundation
 Union Foundation
 Mr. and Mrs. Michael J. Valentino *
 Mr. and Mrs. Mark Waldman *
 Mr. Frank E. Walsh, Jr./Sandy Hill Foundation
 Western Union Foundation
 Willis Group

* capital campaign † deceased

the
 donors
 world.

pillar

Anonymous *

Estate of Mary Doris Abbott * †

Mrs. Joan L. Acken *

Mr. Richard B. Ahlfeld

Alliance Telecommunications

Allied Health Care Services

All-State Legal

American General Title Agency

Applied Information Group, Inc.

Dr. and Mrs. James Aragona

Arch Insurance Group

Mr. Oliver M. Arcilla *

Mr. and Mrs. Ardis

Mr. and Mrs. Charles F. Armbrust *

Dr. and Mrs. Michael J. Armento *

Atlantic Health System

Mr. and Mrs. Robert Azarow *

Bailye Family Charitable Foundation *

Mr. Robert K. Baker *

Mrs. Margaret Balkovec

Banujo Advertising and Design

Bank of America, N.A.

George W. Bauer Family Foundation

Ms. Nicole R. Baxter *

Mr. John Bayliss *

Bederson & Company LLP *

Mr. and Mrs. John R. Berger *

Mr. Alfred Bergner *

Mrs. Sandra Berman *

Frank R. Besson, D.M.D.

Binsky & Snyder, Inc.

Ms. Nicole Blackwell *

Mr. and Mrs. J. Kent Blair, Jr. *

Mr. John R. Blasi, Esq. *

Blue Moon Yoga

Mr. Ricky Boll

Bonland Industries

Boston Brace International, Inc.

Mr. and Mrs. Patrick Boyle

Ms. Mary Jane Boyle *

The Boyle Family Charitable Foundation *

Boyle Real Estate Group, LLC

Mrs. Allison Bradford *

Mr. and Mrs. Nicholas Bradshaw

Mr. Steven F. Brakl * †

Breaker Electric, Inc.

Ms. Jeanne C. Brelle

Mrs. Jeannie Brooks *

Mrs. Freda Brown *

Mrs. Suzanne Brown *

Ms. Susan Buchner

Mrs. Judith E. Burgis *

Dr. Sharon Burke and Mr. John P. McDermott *

Ms. Jeanne Butler

C&R Insurance Services, Inc.

Car Wash Operators of New Jersey, Inc.

Mr. John R. Carl *

Centene Management Company, LLC

Central NJ Downs Syndrome PAG

Ms. Kitty Sui-Yin Chan *

Ms. Marguerite Chandler *

The Chart Group *

Chasan, Leyner & Lamparello, PC *

Child's Play

Citistreet

David R. & Margaret C. Clare Foundation

Mrs. Jeanne Cleary *

Mr. and Mrs. Allan J. Clelland *

CMU Construction Company

Mr. and Mrs. Peter Cocozziello *

Mr. Hal Cohen

Commerce Bank/Shore, N.A.

Community Foundation of Collier County *

Community Foundation of New Jersey *

Computer Conductors, Inc.

Mr. and Mrs. Robert S. Conte

Mr. Bryan Cook *

Cornerstone Contracting, Inc. *

Cougar Club of New Jersey

Creative Heartwork, Inc.

Mr. and Mrs. Frank Criscitiello *

Mr. and Mrs. Thomas E. Cross *

Mr. and Mrs. Gerald C. Crotty *

Mr. Thomas A. Cunningham

Ms. Sharon Cycak *

Mr. and Mrs. John J. Dalton *

Mr. and Mrs. Michael Daniel *

Mr. Sal Davino *

Mr. Harold E. Deen *

Ms. Sonia Delgado

Mr. Stephen DePalma *

Ms. Virginia Depaula *

Dr. Karen DeWitt and Mr. Frederick DeWitt *

Mr. Frank P. Diassi *

Mr. Rodney Dickens *

DiFrancesco, Bateman, Coley, Yospin,
Junzman, Davis & Leherer *

Mr. Michael A. Dillon and Ms. Margaret Genitempo

Mr. Anthony Dilodovico

Mr. and Mrs. Victor Disanto *

DMR Architects

Mr. and Mrs. Joseph Dobosh, Jr. *

Mr. and Mrs. Robert E. Donahue *

Ms. Shona Donegan *

Mrs. Rosalie Dreitlein *

Mr. Jonathan Dunn

Mr. and Mrs. William J. Dwyer *

Mr. Nabih Eid *

Elberon Development Company *

Empire Lumber & Millwork Co.

Mr. and Mrs. S. Mark Erenstein *

Ms. Cynthia Evans

Excel Environmental Resources, Inc. *

Fanwood Plaza Partners

Fanwood-Scotch Plains Service League Inc.

Fanwood-Scotch Plains Twig I

Mrs. Dorothy B. Fedor *

Ms. Felisha Felming

Mr. & Mrs. Victor Fernandes

Ferrero, U.S.A., Inc. *

Fey Fire Protection

Fine Painting & Decorating Co., Inc.

Mr. and Mrs. Andrew W. Finer *

Finley Properties, LLC

Mr. Paul Fitzgerald *

Mr. and Mrs. James Foley *

Mr. Barclay F. Fox

Fr. Emil J. Kapaun Columbiettes

Fromkin Brothers, Inc.

G & T Erectors LLC

Miss Jessica Galli *

Mr. Philip C. Galli *

Mr. Tom Gallina

Mr. and Mrs. Michael Gambro *

Ms. Gladys Garcia *

Garfunkel, Wild & Travis PC

Mr. Carl Gelormine *

Genova, Burns & Vernoia

Ghiorso & Sorrenti, Inc.

Gibbons, Del Deo, Dolan, Griffinger & Vecchoine, PC *

Gillespie

Mr. and Mrs. Robert J. Gillespie *

The Gillespie Group

Mr. Kenneth J. Gilmore

Barbara L. Gladysiewicz Memorial Fund

Golden Girls of Silverwoods

The Mildred Goldfarb Charitable Foundation Trust

Mr. Ismael Gonzalez

Ave O. Gozo-Tien, M.D. *

Mr. Nicholas Galton

Grampy's Charity/Callahan Foundation *

Grand Lodge F. & A. M. of New Jersey

Mrs. Hunter B. Grant, Jr. * †

Mrs. Nancy Grant

Mr. Nicholas J. Grasso, Jr. *

Mr. Paul M. Graves *

Mrs. Roberta Grecco

Mr. Andrew Greene

Ms. Ellen Guarnieri
 Ms. Susan Gutman *
 Mr. Heliodoro Guzman, Jr.
 Mr. Bill Haffner
 Mr. Thomas R. Harris, III *
 Mr. and Mrs. Fred Havron
 Health Ed
 Healthcare Services Group, Inc.
 HealthSouth Rehabilitation Hospital
 of Toms River

Mr. and Mrs. Dean Janeway, Jr. *
 Yvette Janvier, M.D. *
 Joseph Jingoli & Son, Inc.
 JMK BMW Auto Sales, Inc. *
 Ms. Magdalene Jolley
 JOMAC Construction, Inc. *
 The Juliet Katherine Fund *
 K.J. Sessa, Inc.
 Mr. Jerome Kacprowicz, Sr.
 Mr. Ken Karl

Mr. and Mrs. Andrew Kiss *
 Kiwanis Club of Caldwell-West
 Essex *
 Kiwanis Club of Shadow Lake Village *
 Mr. and Mrs. Barry Knapp *
 Ms. Anita M. Kneeleay *
 Knights of Columbus Union Council
 #4504
 Mr. and Mrs. Alfred Koepp
 Mr. and Mrs. Paul H. Kolterjahn
 Mr. Joseph A. Korb

Mr. and Mrs. Joseph D. Leone, Jr.
 Mr. Williams G. Lewis *
 R.F. Liebler *
 Mr. Gregory W. Lobo *
 Loews Foundation Matching Gifts
 Program *
 Mr. Anthony Lopresti
 Mrs. Anne Lowe *
 Mr. Carmine Luizza
 Ms. Joanne Lund



Mr. and Mrs. Harold Herbert
 Mr. Russell L. Hewit *
 Hidden Pond Foundation *
 Highland Associates
 Mr. Edward R. Hintz *
 Holmdel High School Key Club
 Mr. Christian Hoover
 Horizon NJ Healthcare
 Mr. and Mrs. Howard Horowitz *
 Ms. Kathleen Ibanez *
 Innovative Risk Solutions, Inc.
 Interstate Drywall Corp.
 Mr. and Mrs. Robert M. Jackson *

William J. Kauffman
 Ms. Christine Kebeck *
 Ms. Bronwen Kelly
 Ms. Sarah B. Kelly
 Brian and Josephine Kelly Family Fund
 Mr. & Mrs. Thomas V. A. Kelsey *
 Mr. Adam Kerins *
 Henry H. Kessler Foundation
 KF Mechanical Heating
 & Air Conditioning
 Kid's Directory
 Mr. and Mrs. Scott Kimmelman *
 Mrs. Carol Toni Kipilman

Mr. and Mrs. Peter L. Korn
 Mr. Scott Kraemer
 Ms. Michele E. Krosnick *
 La Salon Departemental De N.J.
 Mr. and Mrs. Paul R. Lamb *
 Mr. William J. Lamia *
 Ms. Susan W. Landmesser *
 Langan Engineering
 & Environmental Services *
 Mr. David P. Langlois *
 Mr. and Mrs. Bradley Lawrence
 Mr. George Lazo
 Ms. Laurel L. Leithauser *

Mr. and Mrs. Roy Lundgren
 Mrs. Virginia Lynn *
 MAC Source, Inc.
 Mr. and Mrs. Mario M. Maggio *
 Magyar Bank
 Mr. James D. Mahan *
 Ms. Debra Malek
 Mr. Robert Mangan *
 Ms. Linda J. Marchand *
 Mr. and Mrs. Thomas Maresca
 Mr. and Mrs. John Mariani *
 Mr. and Mrs. Eric Martens

* capital campaign † deceased

Martin-Bontempo-Matacera-Bartlett, Inc.
 Maser Consulting PA
 Mr. George Mathews
 Dr. and Mrs. Edward Mauceri *
 Mrs. Rebecca Mazzarella *
 Ms. Mary M. McArdle *
 Mr. James McAuliffe
 McCarter & English, LLP *
 Mr. Walter McDonald *
 Ms. Dawn McDonald *
 Mr. and Mrs. John McGovern *
 Ms. Susan D. McGrath
 Mr. John D. McGurk *
 Mr. & Mrs. Daniel J. McNabola *
 Mr. and Mrs. James M. McNamee
 McRoberts Protective Agency, Inc.
 Mr. and Mrs. Eric Meder *
 Meeting Professionals International NJ Chapter
 Dr. and Dr. Uday C. Mehta *
 Meta C. Mergott Foundation *
 Merrill Lynch, TCR Group
 Estate of John W. Metzler * †
 G. Martin Meyers, P.C. *
 Mr. and Mrs. Walter J. Mezynski *
 Mr. Cyprain Mgbako
 Mr. Paul T. Miller
 Mrs. Barbara D. Mitchell *
 Modern Electric Co. *
 Mr. and Mrs. John Modzelewski *
 Monterey Fund, Inc. *
 Mr. John M. Moore
 Mr. Robert J. Moore *
 Moretrench American Corp.
 Mr. Joseph Moretti *
 Morgan Stanley & Company, Inc.
 Mrs. Virginia H. Moriarty
 The Edmond N. & Virginia H. Moriarty Charitable Foundation
 Ms. Nanci Morris
 Ms. Christina Morrissey
 Ms. Carol Morrow *
 National Junior Wheelchair Athletes Fund
 New Jersey Chapter IFMA
 New Jersey Council of Teaching Hospitals
 New Jersey Shore BMW Riders, Inc.
 New Jersey State Safety Council, Inc.
 New Jersey Woodturners
 Mr. and Mrs. William E. Newell, Jr. *
 Mr. Patrick J. Newsome *
 Mr. Donald Nicholson
 Novy & Associates LLC
 Ms. Christine Nugent *
 Mr. Jim O'Brien
 Ocean County Sheriff's Officers PBA Local 379
 OceanFirst Bank
 Mr. and Mrs. Robert L. O'Connor *
 Mrs. Michele O'Connor *
 O'Donnell & Naccarato, Inc.
 Mr. and Mrs. Clyde Ogarro
 Mr. and Mrs. Ken O'Hanlon *
 Ms. Grace O'Hare *
 Mr. William J. Olderman
 Mr. Philip V. Oppenheimer
 Mr. Michael A. Ostroff *
 Ms. Ingrid Padilla
 Mrs. Nancy Panarese *
 Paragano Family Foundation *
 Mr. Alok Pareek *
 Mr. Anthony J. Pascazio *
 Ms. Amy S. Paul *
 Mr. and Mrs. Eduardo Perez-Santalla *
 Barry W. Perry
 Ms. Virginia Petrillo
 Thomas C. Phelan, Esq. *
 Philip Morris USA Inc.
 Ms. Anna Phillips
 Mrs. Carolyn M. Pine *
 Mr. Ben R. Plotkin *
 Plumbers & Pipefitters, Local Union No. 9
 Ms. Meridy Pockell *
 Mr. Stephen Pollock
 Mr. and Mrs. Jerome Potter *
 Princeton Design Group
 ProSource Foundation, Inc.
 Mrs. Donna Provenzano *
 The Provident Bank *
 The Prudential Foundation *
 Mr. and Mrs. Charles Pulis, Jr. *
 Quality Medical Transport, Inc.
 Mr. and Mrs. Leslie Quick *
 Mr. Michael Recchia
 Recycling Partners, Inc.
 Redeemer Lutheran Church and School
 Ms. Elise Redmond *
 Regent Atlantic Capital, LLC
 Ms. Caroline M. Regis
 Mr. and Mrs. William J. Reulbach, C.P.A. *
 Ms. Beatrice E. Reynolds
 Mr. and Mrs. Richard T. Richardson *
 Mr. and Mrs. Wilfredis Rivera
 Mr. and Mrs. Francesco Rizzo *
 Mrs. Cora Rizzuto
 Mr. and Mrs. Joseph Robillard
 Mr. David E. Roebuck *
 Mr. Jeff Roland *
 Ms. Tracey Ann Romanello *
 Mr. Robert C. Rooke
 Mr. and Mrs. Jeffrey D. Rosen
 Bradford J. Ross, Ph.D. *
 Rumson-Fair Haven Regional High School
 S.M. Electric
 Sacred Heart School
 Mr. Jaime Santillan *
 Estate of Lawrence Schacht * †
 Lawrence Schacht Memorial Foundation * †
 Mr. Joel A. Schleicher *
 Mr. Michael Schmerbeck
 Ms. Stacey Schultz-Shrewsbury *
 Miss Kathleen E. Shannon *
 Ms. Junnie A. Sharkey *
 Mr. and Mrs. Peter J. Sinclair *
 Mr. and Mrs. Richard Skillman *
 Mrs. Janet W. Smith
 Ms. Isabel B. Smith *
 Soroptimist International of Lakewood
 Mr. Richard R. Speranza
 Mr. Roderick Springer
 Starbucks Coffee Company
 Mr. Marc Stein
 Mr. Terriel Stembridge
 Ms. Grace P. Stevick
 Mr. Howard Stipe
 Mr. George I. Stirrup *
 Structure Tone Corporate
 Mr. Richard K. Struthers *
 James & Rita Sullivan Family Foundation
 Mr. and Mrs. John G. Sully *
 Summit-Short Hills Twig I
 Mr. Jack Swire
 Reverend and Mrs. Elmer A. Talcott
 Target
 Thomas Edison State College
 Mr. David Thornton, Sr.
 Mr. Richard W. Tkach
 Torcon, Inc.
 Tru-Fit Frame and Door Corporation
 Mrs. Betty H. Trullinger *
 Mr. Joseph A. Trunfio
 Turtle & Hughes Inc.
 Kuppuswamy Umashankar
 Union A.A.R.P. - Chapter #4026 *
 Union County Office of Cultural and Heritage Affairs
 Union County Rugby Football Club Corp.
 United Methodist Church in Union
 United Way of Essex & West Hudson
 Mr. and Mrs. Marc Urowsky *
 Vailsburg Irish/American Association
 Ms. Margarita Valentin *
 Mr. and Mrs. Joseph D. Valentino *
 Mrs. Heather Valeo *

Ms. Marina Vargas *
 Mr. Umberto Vecchiarelli, Jr.
 Villani Bus Company *
 Ms. Margarita Villegas *
 Vollers Excavating & Construction, Inc.
 Wachovia
 Wachovia Bank Pooled Income Fund
 Mrs. Maureen Walsh *
 Mr. and Mrs. Leigh Walters
 Mrs. Estelle Weiner
 Mr. Mark Weiss, C.P.A.
 Weldon Materials, Inc.
 Westfield Y's Men's Club
 Westminster Wallpaper & Painting
 Mrs. Joan C. Wilde
 Mr. Michael Wilenski
 Mr. Daniel Willis *
 Mr. and Mrs. Rob Wilner
 Windels Marx Lane & Mittendorf, LLP *
 Ms. Gloria Winter *
 Mr. and Mrs. Arthur Wisniewski *
 Mr. John Wolfe *
 Woman's Club of Brick Township, Inc.
 Mr. Mark Wydner
 Wyeth Pharmaceuticals *
 Mr. and Mrs. Matthew J. Wyatt *
 Krishan Yalamanchi, M.D. *
 Ms. Sally Yoblick *
 Mr. Michael York, Esq.
 Ms. Deborah Zerbib
 Ms. Christina A. Zukowsky
 Zurich North American Specialties

provider

Mr. and Mrs. Joseph J. Allocca *
 Amper, Politzner & Mattia PC
 Bristol-Myers Squibb Foundation *
 Mr. Donald Bryan *
 Mrs. Irene M. Cappuccino *
 Mr. John Dawidowski
 Mr. Steve Drogin
 Mr. and Mrs. Robert Golden *
 Hammond Contracting Co., Inc.
 Ms. Myesia Jarrett
 Ms. Nancy Johnson-Velazco *
 Mr. Eugene V. Kirkwood *
 Ms. Claire Lehr *
 Ms. Theresa M. Leinker *
 Ms. Patricia Leitz *
 Mr. Stephen Lowe *
 Ms. Anne C. Maher

Ms. Maureen Mahler *
 Mr. and Mrs. Joseph C. Marino, Jr. *
 Mr. and Mrs. James P. Moran *
 Mr. Edward J. Mulreany
 Pfizer Foundation
 Roseann Pizzi, Psy D. *
 Thomas A. Rugino, M.D.
 Lois Schneider Realtor, Inc.
 Ms. Kathleen Snyder
 V.A. Spatz & Sons Construction, Inc.
 Mr. Zachary Wellbrock

guardian

Ms. Hilary Abramowitz and Mr. Donough Carville
 Ms. Rebecca Addo-Nartey *
 Aeterna Zentaris, Inc.
 Mr. and Mrs. James F. Ahern *
 AIG Matching Grants Program *
 Mr. Michael Albano
 Mr. and Mrs. Andrew D. Allen *
 Allstate New Jersey Insurance Company
 D. Pike Aloian *
 Alphagraphics Store #321 - Edison
 Mr. R. Alvarado
 American Signcrafters *
 Ms. Nancy Amin
 Anderol
 Anonymous *
 Anonymous *
 Mrs. Julie Appel *
 Miss Yvonne Archie *
 Mr. and Mrs. J. Robert Arthur
 Rahshida Atkins
 The Auxiliary at Robert Wood Johnson University
 Hospital
 Barbella Construction Services, LLC *
 Mr. Kevin Barry
 Mrs. Nancy L. Basford *
 Beach Arlington Custom Embroidery Co, Inc.
 Becton Dickinson and Company
 Mr. and Mrs. Jeffrey W. Benton
 Mr. Giorgio Bernasconi
 Mr. and Mrs. Jack Bilman
 Mr. and Mrs. John E. Black *
 Ms. Dorothy Blakely
 Blue Knights Ocean Co., Chapter XI
 Ms. Carmen Bocangel *
 Mr. Lawrence G. Botts, Jr.
 Dr. Tori Bronaugh *
 Ms. Theresa Brooks
 Mrs. Sara C. Brown *

Ms. Lori Brown-James
 Ms. Lori Butyn
 C.R. Herder & Son Contractors *
 Miss Jessica Castello *
 Cathedral of the Air
 Mr. William F. Cave
 Mr. Christopher Charles *
 Chart Links, LLC
 Mr. and Mrs. Scott Chesney
 Mr. Stephen Childers *
 Mr. and Mrs. Anthony J. Cimino
 Mr. and Mrs. William J. Clark *
 Mr. Brian Clark
 Mr. and Ms. Wayne Clevenger
 Mr. J. Barry Coccoziello *
 Mr. Michael Cohen *
 Ms. Melissa Cohen *
 Mr. Vincent E. Colarusso
 Mr. and Mrs. Michael Colicchio
 Commerce Bank
 Mr. Dan Convery
 Mr. and Mrs. David C. Cook *
 Ms. Eileen Cook *
 Mr. and Mrs. George Cooper *
 Mr. and Mrs. Gil Corbley *
 Mrs. Joanne Cox *
 Mr. and Mrs. Don Croke *
 Mr. and Mrs. John F. Cronin *
 Mr. Anthony Cuccia and Family *
 Mr. Robert Curti *
 D'Annunzio & Sons, Inc. *
 Mr. Gregg F. David
 Mr. and Mrs. Elio A. De Matteo
 Ms. Merlin M. de Pauw *
 Mr. Sheldon Dean *
 Ms. Theresa Defosse *
 Mr. Anthony Defreitas
 Mr. and Mrs. F. Jim Della Sala *
 Mr. Daniel Deluca
 Mr. Pat DeMartino *
 Dr. and Mrs. Martin Diamond
 Mr. Dominic DiGiorgio
 Mr. and Mrs. Robert E. Dillon *
 Mr. Miquel Dinten
 Douglas Cosmetics
 Mr. Edmund R. Drosdick *
 Mr. and Mrs. Frank Earl *
 Mr. Maurice Ebanks
 M. Egner
 Einhorn, Harris, Ascher, Barbarito,
 Frost & Ironson, P.C. *
 Eisenreich Family Foundation, Inc. *
 Mr. and Mrs. Kenneth A. Ernst *
 Mr. Tiombe Ewing

- Mr. Kenneth E. Fears *
- Federal Business Center *
- Federal Hill Risk Management, LLC
- Mr. Andrew B. Federbusch
- Fiduciary Trust Co., International
- Ms. Katherine Finelli *
- Mr. and Mrs. Bruce Fischer
- Mr. Thomas Flanigan *
- Mr. and Mrs. Martin J. Freeman *
- Mr. Louis S. Friedman
- Mr. and Mrs. Pierson Friend *
- Mr. and Mrs. Joseph Gachko
- Mr. and Mrs. James F. Gallagher, Jr. *
- Mr. Thomas J. Ganley *
- Ms. Panthea Garcia *
- Mr. Albert Getz *
- Ms. Jean A. Giacone
- Mr. Stephen T. Goin *
- Golconda Court No. 16 Daughters of Isis
- Mr. and Mrs. Richard F. Goldhaber
- Mr. Bernard Goldsmith *
- Ms. Yanina Gonzalez *
- Mr. and Mrs. Steven Gooen *
- Mr. Stephen Grams
- Ms. Carol Grandinetti
- Mr. Lawrence Grant *
- Mr. Michael P. Graziano
- Mr. and Mrs. Jimmy Guerrero *
- Mr. James Hahn
- Mrs. Michele Hall-Duncan
- Mr. Christopher D. Harris
- Mr. Gregory Hartnett *
- Mr. and Mrs. Robert Heimowitz *
- Ms. Tracie Hentschel
- Mr. Warren E. Hoffman *
- Mrs. Caroline Holt *
- Mr. and Mrs. Charles Holzberg
- Mr. Harvey A. Holzberg & Ms. Janice Chiantese
- Mr. Michael Hopkins
- Mr. Jeffrey Horowitz *
- Mr. Daniel M. Hotko
- Hubco Health Care Group
- Mr. Joseph Hutchinson
- Illinois Tool Works Foundation *
- Impact Incentives & Meetings, Inc.
- Innovative Remodeling Solutions
- Mr. Stuart Jasphy
- Mr. and Mrs. Harold Kamine *
- Mr. and Mrs. Toros Kapoian *
- Estate of Doris Keller * †
- Kiwanis Club- LVW Welfare
- Mr. and Mrs. Jon Knapp *
- Carla and Thomas Kocaj *
- Mr. and Mrs. Arthur Koenig *
- Ms. Kathleen T. Krom *
- Mr. George M. Kunath
- Mr. Robert Kunzel
- Mr. Sal La Greca *
- Ladies Philoptochos Society of the Holy Trinity Greek Orthodox Church *
- Ms. Christina M. Lado
- Mr. and Mrs. Jim Lambert *
- Mr. and Mrs. James Langsdorf *
- Ms. Jennie Lauricella *
- Mr. and Mrs. Patrick Lee
- Ms. Patricia Leitz *
- Mr. and Mrs. Sai Leong *
- Mr. and Mrs. Darren J. Lesinski
- Mr. and Mrs. Neil M. Levine
- Mr. Stephen Lihn *
- Ms. Phyllis Lissauer
- Mr. and Mrs. Eduardo J. Lopez
- Mr. and Mrs. Thomas Maccari *
- Mr. and Mrs. David MacRae
- Joseph A. Magotch, D.D.S.
- Mr. and Mrs. Peter Maiorano *
- Mr. and Mrs. Rocco R. Mangiarano
- Ms. Connie Marchi
- Ms. Pura Martinez *
- Timothy McCabe, D.M.D.
- Mr. Kevin T. McCaffrey
- McGraw-Hill Companies
- McKinsey & Company, Inc.
- McManus Middle School
- Mr. & Mrs. Daniel J. McNabola *
- Medco Health Employee Giving Campaign
- Medequip International
- Mr. Edward Melville
- Mr. Brad Melvin *
- The Mens Club at Lake Ridge Bingo *
- Mr. Neil Meyers *
- Micro Products International
- Midrano Brothers, Inc.
- Miller & Chitty Company, Inc. *
- Ms. Emily M. Mlinarovich *
- Mr. Mukund J. Modak *
- Mr. and Mrs. Rosendo Molina *
- Mr. Herman Mondesir
- Moody's Foundation
- Mr. Joseph Moretti *
- Moschello Electric, Inc. *
- Mr. and Mrs. Robert Motacki
- Mother's Center of the Jersey Shore
- Mr. Robert E. Mulholland
- Mr. William Naess
- Mr. and Mrs. Mysore L. Nagaraja *
- Mr. George Nicol *
- Mr. Patrick Nolan *
- Mr. Mark Nudo
- Lane T. Oberembt *
- Mr. Romanus Okorie
- Mr. and Mrs. Douglas W. Oliver *
- Mr. Kent Owens
- Mr. and Mrs. Allen Paskow
- Mr. and Mrs. Bijen Patel *
- Mr. and Mrs. Alexander Pedicone *
- Pfizer Foundation *
- The Pick Foundation *
- Mr. Joseph Pickton *
- Mr. Hermes Pineda
- Pinnacle Benefits Group LLC
- Ms. Harriet Polonsky *
- Ms. Megan R. Pope *
- Ms. Denise Porter
- Mr. Stephen Pote
- Princeton Public Affairs Group, Inc.
- Mr. Bruce S. Raiffe *
- Raymar Associates, Inc. *
- Mr. Tom Reid
- Richel Family Foundation
- Ms. Sheila Rick *
- Ms. Kelly Robertson *
- Mr. and Mrs. Thomas D. Rose *
- Ms. Monica Roth *
- Mr. and Mrs. John F. Ruffle
- Saint Peter's University Hospital
- Mr. Karl Saks *
- Sanford Brown Institute - Iselin
- Mr. Rafael Santos
- Mr. Michael S. Sarnoff
- Mr. Lewis S. Satulsky *
- Ms. June M. Sayben *
- Mrs. Lorraine Scala *
- Mr. John J. Scally, Sr. *
- Mr. Justin M. Schack and Ms. Roseanne F. Dattilo
- Ms. Laura Schetelich
- Mr. and Mrs. George H. Schlitt
- Mrs. Sadie Schoss *
- Jitendra & Veena Sharma *
- Mr. Kenneth J. Sherman
- Mrs. Carol Sherry *
- Ms. Jennifer L. Smith *
- Ms. Tavisha Smith
- Mr. Roger Snell *
- Mr. and Mrs. Michael Spada
- Mr. James Spano
- Mr. William F. Steinen *
- Ms. Jacqueline Strigl *
- Mr. and Mrs. Michael Subrizi
- Mr. Saad Suhail

- Ms. Margaret T. Svocak *
 TD Ameritrade Clearing
 Thomas P. Hughes School
 Mr. and Mrs. R. Donald Thomson *
 Ms. Linda M. Traute *
 Mr. and Mrs. Jack Turner *
 Miss Jane E. Ulaki *
 United Way of New York City
 Mr. David R. Valian
 Mr. and Mrs. Richard Vansprang *
 Mr. and Mrs. David Veno *
 Ms. Maria Villa Ramirez
 Ms. Theresa Villani
 Mr. Jerry Vitillo
 Ms. Lorraine Voneeden *
 Mr. & Mrs. Voulo
 Mr. and Mrs. Dwight Walker
 Lee K. Wallace *
 Mr. and Mrs. Thomas J. Walsh *
 Mr. and Mrs. Robert W. Weber *
 Mr. Frank G. Weber *
 Mr. Gary Weiner
 Wellpoint Foundation
 Westfield Twig II
 Robert J. Willis, M.D.
 Mr. Jeffrey Winter
 The Wireless Zone Foundation for Giving, Inc.
 Mr. and Mrs. H. Boyd Woodruff
 Mr. and Mrs. George B. Yeager *
 Mrs. Sharon Yevchak *
 Mr. Anthony Zappula
- Ms. Lauren Arnold ***
 Mr. and Mrs. Aricelio Assis *
 Mr. and Mrs. Joseph E. Attanasi, Sr.
 Avon Products Foundation, Inc.
 Mr. Robert Ax
 AXA Equitable Life Insurance Company
 Ms. Nahla Azmy and Mr. Jeffrey Russo *
 Mr. and Mrs. John C. Baer *
 Mr. George Bailey *
 Mr. Gerald B. Baker and Chaplain Cherryl J. Baker *
 Mr. and Mrs. Harrison Ball, Jr. *
 Ms. Carol E. Barker *
 Mrs. Billie Barlett *
 Ms. Cheryl Barnes
 Mr. and Mrs. Anthony Bartell *
 Election Fund of Kip Bateman *
 Mr. Raymond H. Bateman *
 Ms. Maria Batista
 Bayshore Fitness & Wellness Center
 Mr. Terry Bearce
 Mr. and Mrs. Michael Beck *
 Mr. and Mrs. James Belfield *
 Mr. and Mrs. Matthew Berke *
 Mr. and Mrs. Herb Beron
 Ms. Stephanie Besz *
 Ms. Mary Anne M. Bifulco
 Mr. Louis Birmingham
 Mr. Salvatore Blasi
 Mr. and Mrs. Gil Blitz *
 Jacquelyn Borg, Ph.D. *
 Mr. & Mrs. Kurt Borne
 Mr. and Mrs. Walter C. Bradford *
 Ms. Sandy K. Bramhill *
 Mr. Albert L. Brennstainer, Jr. *
 Seymour Bressler, C.P.A. *
 Kevin P. Brown, LLC *
 Mrs. Phyllis Buchsbaum *
 Buffets, Inc.
 Mr. Naim Bulbulia, Esq.
 Mr. Dennis Buoye *
 Mr. Robert C. Burchell and Ms. Catherine J. Mathis *
 Mr. Kareem Burgos
 Ms. Celia M. Byrne
 Mr. and Mrs. David Cabornero *
 Miss Photiny A. Caldes *
 Mr. and Mrs. Alan W. Canell
 Mr. and Mrs. Thomas Canete
 The Capital Group Companies, Inc.
 Mr. Nelson A. Carhart *
 Mr. Frank Carotenuto *
 Mr. and Mrs. Frederick Caruso *
 Mr. and Mrs. Daniel D. Cassidy *
 Mr. Peter Castelli
- Ms. Sewana Catoe-Solomon *
 Mr. Bart A. Chase *
 Chatham Main Contractors *
 Mr. and Mrs. Charles E. Childs, III
 Chris Anderson Roofing & Erecting Co., Inc.
 Mr. Joseph Ciurczak * †
 Mr. Arthur J. Coffey *
 Mr. Michael P. Cohan *
 Mr. Jerome M. Cohen
 Mr. Matthew Cohen *
 Mr. Dominick Comnesso *
 Congregation B'nai Jeshurun
 Mr. Ken Conigliaro
 Mr. Timothy Connelly
 Ms. Maud H. P. Connor *
 Mr. Medard Connor *
 Mr. and Mrs. Ryan N. Cookerly
 Ms. Susan Copeland *
 Mrs. Elizabeth W. Cort *
 Mr. Joseph Cortico
 Mr. and Mrs. Stanley Corwin *
 Ms. Carolyn M. Costello
 Coviello Bros., Inc. *
 Mr. and Mrs. John F. Cozzi
 Mr. Bruce A. Crawford
 Creative Agency Group
 Children's Specialized Hospital Marketing Dept. *
 Children's Specialized Hospital Speech Dept. *
 CTC Renovations
 Mr. John K. Cunningham *
 Mr. Anthony D'Amore
 Mr. Craig Darling
 Mr. and Mrs. James J. Debbie, Jr.
 Mr. Glen DeBiosa
 DeGeorge Development, LLC
 Mr. Ramon Delgado *
 Mr. Albert Delprete
 Delta Dental Plan of New Jersey, Inc.
 Ms. Ann-Margaret Demarco
 Mrs. Elaine Dent *
 Ms. Susan Dewoski
 The Honorable Donald T. Di Francesco
 Mr. and Mrs. Eugene P. Dibella *
 Mr. Bruce Dickerson
 Mr. Brian Dobosh
 Mrs. Mark Doherty
 Mr. Robert Dolan
 Mr. John A. Dominiacki *
 Mr. Frederick Donatelli
 Ms. Evelyn Dooner *
 Mr. Daniel J. Doyle
 Mr. Roger C. Dumont
 Mr. Thomas Dunham

sponsor

- Abbott Laboratories
 Mr. Yasser Abdelkader
 Mr. Rafael Abreu *
 Mr. and Mrs. John J. Acton, III *
 Ms. Yvonne Albericci *
 Ms. Nancy Albericci *
 Ms. Lorraine Aldred *
 Taheerah Ali
 Ms. Debra L. Allison
 AMALCO American Aluminum Company
 American Express Foundation *
 American Home Shield
 Mrs. Virginia C. Anderson * †
 Anonymous
 Anonymous *
 Ms. Nina B. Anuario
 Aon Foundation *
 Ms. Maria Arbiol

Echo Lake Nine Hole Women's Golf Group
 Mrs. Patricia Edwards
 Ms. Dena Einhorn
 Electronics Design Group, Inc. *
 Mr. and Mrs. Richard H. Elliott *
 Ms. Linda E. Encinas
 Mr. and Mrs. Frederick W. Engel
 Mr. Sherman M. English
 Ms. Nancy Enrico
 Ernst & Young LLP
 Mr. Robert C. Errico
 Essex Neurological Associates
 ExxonMobil
 Mr. William R. Faitoute
 Ms. Mary Fajardo *
 The Farm at Green Village
 Mr. Robert Farrell
 Ferreira Construction Co., Inc.
 First Presbyterian Church
 Mr. and Mrs. John C. Fitterer, Jr.
 Mr. John J. Fitzgerald
 Mr. and Mrs. Paul H. Flynn *
 Ms. Michelle Fogerty *
 Elvira Foglia Downs, M.D. *
 Ms. Marianne Foley *
 Mr. and Mrs. Edward F. Foote *
 Mr. and Mrs. Gary E. Fox *
 Mr. Steven Frank
 Mrs. Lillian Frank *
 The Honorable Robert D. Franks *
 Ms. Regina Freeman *
 Garry Frisoli, M.D. *
 Ms. Emily Gachko
 Mrs. J. Brooke Gardiner *
 Mr. David Gardner *
 Mr. Herbert L. Gardner *
 Mr. Joel R. Geisler
 Ms. Joan Genova *
 Mr. and Mrs. David Gialanella *
 Mr. Alex Giaquinto, Jr.
 Mr. and Mrs. James G. Gibson
 Mr. Stephen Gibson
 Ms. Lorie Gillespie
 Mr. & Mrs. Lewis Giordino *
 Mr. and Mrs. Stanley Godt
 Ms. Julia Goerlich *
 Ms. Leighann Gonzalez
 Mr. Rudolph Graddy, Sr.
 Mr. Dennis A. Graham
 Mr. John J. Graziano *
 Mr. Dennis Greeley
 Mr. and Mrs. George D. Green *
 Mr. and Mrs. Thomas Greenhall *
 Ms. Michelle Gregorich *
 Mr. Lawrence V. Gries *
 Mr. and Mrs. Henry Grifka *
 Mrs. Nettie Grimes *
 Mr. and Mrs. George P. Gross *
 Ms. Maureen Grover *
 Mr. and Mrs. David M. Gunia *
 Mr. Paul Habib *
 Mr. Richard E. Haeberle
 Mr. Alfred Hagedorn *
 Ms. Susan B. Hammell *
 Ms. Frances L. Hammersten *
 Mrs. Patricia Hanigan *
 Mr. and Mrs. William D. Hardin
 Jill Harris, Ph.D. *
 Ms. Barbara L. Harris *
 Mrs. Theresa Harris-Jones *
 Mr. John C. Haugh
 Mr. Thomas F. Hayes
 Mr. and Mrs. Carl V. Hazen
 Mr. Robert Heinen *
 Mr. and Mrs. Isaac Heller
 Ms. Verrolyn Henry
 Mr. and Mrs. Joseph Higgins
 High Technology High School
 Ms. Estelle P. Hiller *
 Ms. Mary Holden *
 Ms. Rachel Holland *
 Mr. Douglas E. Holloway *
 Mr. Ralph P. Holzmillier *
 Hospital Central Services, Inc.
 Mr. and Mrs. Damian Hughes *
 Mr. and Mrs. Timothy J. Hughes
 Mr. and Mrs. Bernard Hvozdovic *
 Institutional Investor
 iQues Consulting Inc.
 Mr. Robert D. Jones
 Ms. Stephanie Jones *
 Mr. Sanil Joshi
 Mr. and Mrs. David A. Katz *
 Mrs. Paul Katz
 Mrs. Genevieve Kay *
 Mrs. Nancy J. Kazanecki *
 Mr. and Mrs. Richard M. Kehoe *
 Ms. Elizabeth Kennedy
 Mr. John J. Kerins
 Mr. and Mrs. David Kessler *
 Mr. Harry King *
 Ms. Karen Kirton-Coleman
 Kiwanis Club of Toms River Daybreak *
 Mrs. Laurene A. Kiza *
 Mr. and Mrs. William P. Kleemeyer
 Mr. and Mrs. Scott Knaul
 Mr. and Mrs. Christopher G. Kopser
 Ms. Kathleen Korzeneski *
 Mr. and Mrs. Edward Kraus
 Mr. and Mrs. Edward Kresge *
 Mr. Anton Kristen, Jr. *
 Mr. Richard W. Kruger *
 Mr. Rajesh Kshatriya
 Srinivas Kunigal
 Mr. David Langer
 Mr. and Mrs. John L. Langeveld
 Mr. Joseph Lapara *
 Mr. Donald F. LaPenna, Jr.
 Mr. Matt Laplante
 Mr. and Mrs. Brian Leddy *
 Mr. Albert Lehman *
 Ms. Constance Leso *
 Mr. and Mrs. Neil M. Levine *
 Mr. Fred Levy *
 Nicholas Liakas, D.D.S.
 Mr. Norman Lichtman *
 Mr. Ronald E. Lindy *
 Mr. Robert J. Linn
 Mrs. Michele D. Logan *
 Mr. William Lonergan *
 Mr. Geoffrey H. Longfellow *
 Mr. and Mrs. Eduardo J. Lopez *
 Mr. Thomas Lynch
 Ms. Janice I. Mac Caskill *
 Mrs. Lorraine J. Madden *
 Chidambaram Mahadevan
 Mr. and Mrs. Aiman Mahmoud *
 Ms. Elsie Maldonado
 Mr. and Mrs. John Mallon *
 Ms. Jean E. Mangino *
 Mr. Frank S. Mannuzza *
 Mr. Joseph L. Marion
 Mr. and Mrs. Joseph E. Marioni *
 Ms. Tillie F. Markewicz *
 Mr. James Marotta *
 Mr. and Mrs. Paul J. Maticera
 Ms. Stella Mattease-Esposito
 Mr. George Matthews
 Ms. Joyce Matuza *
 Mr. Robert Mauriello
 Mr. Bret Mazzei
 Mr. & Mrs. Jim Mc Aloon *
 Mr. and Mrs. Brian D. McAuley
 Ms. Melissa A. McCarthy *
 Mr. Robert McCloskey *
 Mr. Kenneth McCottry
 Ms. Lisa McLean
 Ms. Lauren A. McNeany *
 Medco Health Employee Giving Campaign

Mega Care, Inc.
 Mr. George J. Mehm, Jr. *
 Mr. and Mrs. Allen Meisels *
 Ms. Lucy E. Meldrum *
 Carmen Merced
 Mr. Leonard Merola *
 Mr. & Mrs. Gary Merrill
 Met Life
 The Miele Family
 Ms. Ellen L. Miller *
 Mr. Joseph Mirabelli
 Mr. Mitch Molteg
 Ms. Betty Montaya *
 Ms. Vilma Morales
 Mr. and Mrs. James Moroney *
 Ms. Theresa Mortellito
 Mount Saint Mary Academy
 Mountain Plains Mothers of Multiples
 Ms. Elaine Mulreany
 Mr. Daniel Murphy *
 Mr. and Mrs. Robert Mydlowski *
 Mr. and Mrs. Gary Nadeau
 Ms. Christine Nafalski
 Mr. Lawrence W. Nagel *
 Ms. Lisa E. Nakashian
 Mr. and Mrs. Kurt Nathan *
 Mrs. Lanie Navarro *
 Mr. and Mrs. Ian V. Nelson *
 Mr. Dale Nelson *
 Mr. Kevin Nelson *
 Mr. Richard Nemet
 New Providence High School Athletics
 Mr. and Mrs. Brian Newman *
 Mr. Joseph Niemiec, Jr. *
 Mr. Peter Nikolatos *
 Ms. Karen Nobile *
 Noble Title Agency, Inc.
 Mr. Patrick Nolan *
 Mr. and Mrs. Ronald D. Noll *
 Ms. Linda L. Nordstrom *
 Mr. Jim Norman
 Norris, McLaughlin & Marcus, PA
 Mr. Ira S. Novak
 Mr. and Mrs. Robert Obara *
 Mr. and Mrs. John E. O'Connor
 Mr. Arvo R. Oddo *
 Ms. Ann M. O'Hare *
 Ms. Helen Oneill *
 Mr. Charles K. Orr
 Mr. and Mrs. Harold Oslick *
 Mr. Craig Osten
 Ms. Anne Pace
 Mr. Lee-Yuh Pai *
 Mr. and Mrs. John Pallarino *
 Ms. Carolyn Palmer *
 Mr. Earle L. Parker *
 Dr. and Mrs. Victor Parsonnet *
 Mr. Allen Pashkevich
 Mr. Nimish Patel *
 Prashant Patel *
 Mr. Joe Patrick
 Ms. Dawn Pavlick *
 Ms. Margaret M. Pego *
 Penn Jersey Paper Co.
 Mr. and Mrs. Brian Perkowski *
 Mr. and Mrs. Matthew Perry *
 Ms. Jackie Peterson
 Petrucci Family Foundation, Inc. *
 Ms. Picarillo
 Ms. Prudence A. Pigott *
 Miss Margaret R. Pirigyi *
 Dr. Vincenza Piscitelli *
 Ms. Michelle Plotnick and Mr. Michael Plotnick *
 Mr. Ralph Pritchard *
 Mr. and Mrs. Ronald Puorro
 Mr. Brian Raeter
 Rahway Auto Body, Inc.
 Ms. Phyllis Ransford
 Ms. Darlene Rasel *
 Mrs. Christine A. Raymond *
 Ms. Euan Elizabeth Reeves
 Mr. Timothy Reinhardt
 Mr. Kenneth Rendall
 Retail LLC
 Mrs. Carole S. Rhodes
 Mr. Albert J. Rieder *
 Mr. Joseph Riso *
 Mrs. Jean Roberson *
 Ms. Marie Robinson
 Ms. Janet Robusto
 Rockaway Valley Home & School Association
 Ms. Carol Romanshyn *
 Mr. and Mrs. Michael R. Rosivack *
 Mr. Harlan Rothman
 Ms. Eileen Rothman *
 Ms. Jean H. Roxburgh *
 Roxbury High School Key Club
 Mr. and Mrs. Herbert Rozansky *
 Ms. Karen A. Ruffo
 Mr. Marshall Ryan
 Ms. Arlene Sabino *
 Mrs. Borenz Sadej
 Mr. Michael Safoschnik *
 Saint Dominic Academy
 Mr. Anthony C. Saitta *
 Ms. Rosanne Sallette *
 Ms. Carmen Sampson *
 Mr. and Mrs. Jimmy Santiago *
 Dr. and Mrs. Alan J. Sarokhan, M.D. *
 Mr. and Mrs. Walter Satre *
 Schechner Lifson Corporation
 Schiller & Pittenger, PC
 Ms. Maryann Schmit *
 Ms. Geri Schuhalter *
 Mr. and Mrs. Douglas Schwarz *
 Second Baptist Church of Roselle
 Ms. Linda Senf
 Mr. Raj Shah *
 Shapiro Financial Security Group
 Mr. David Shephard, Sr.
 Mr. and Mrs. Eric Shick
 Ms. Karen Ann Shuster *
 Mr. and Mrs. Robbie Smeraldo *
 Mr. and Mrs. Edward C. Smith *
 Mrs. Rosaria Smith
 Mrs. Julia L. Speer *
 Mrs. Susanne Spirko *
 The Sports Academy *
 Mr. William B. Sprecher
 Mr. and Mrs. John R. Spressert *
 Mr. Lakshmpuram Srinivas
 Dr. and Mrs. Steven J. Stanzione *
 State Farm Insurance Companies
 Mr. and Mrs. Joseph Stefans *
 Ms. Linda J. Stevens *
 Ms. Phyllis Stoddard
 Dr. Linda E. Stone *
 Thomas C. Streko, D.M.D.
 Mr. and Mrs. Keith Stroever *
 Mr. Arthur F. Strohmer, Jr.
 Mr. and Mrs. James J. Sulva *
 Mr. John Surdoval *
 Ms. Mary Survill *
 Mr. Ernest E. Taberski *
 Ms. Lonna Taylor *
 Mr. Anthony Teri
 The Town Bank
 John L. Theurer *
 Ms. Monique Thomas-Vierra *
 Ms. Deborah Tiberi
 Mr. Michael Tomasulo
 Mrs. Elisabeth Torinese
 Mr. and Mrs. Jerry I. Treppel *
 Trinity Reformed Church of North Plainfield
 Mr. Joseph Troyanovich *
 Kailin and Marina Tu
 Mrs. Patricia Turberg
 Ms. Suzann B. Turetsky
 UBS Matching Gift Program

Mr. Emery J. Ungrady, Jr.
 Union Country Life Member Club
 Telephone Pioneers
 Mr. Richard Urbani
 Ms. Annabell Velez *
 Mr. Thomas Vergura *
 Mr. Frank Verone
 Ms. Joan C. Verplanck *
 Viking Yacht Club
 Mrs. Aaron Vogler *
 Mr. and Mrs. Thomas C. Wafer
 Mrs. Patricia A. Waldvogel *
 Mr. Roosevelt Walker
 Ms. Phyllis Walker *
 Ms. Patricia Walsh
 Mrs. Robin Walton *
 Mr. Robert T. Warrington *
 Mr. Kendall Warsaw
 Mr. John N. Weed *
 Mr. Larry A. Wehr *
 Mr. and Mrs. William P. Weichert IV *
 Mr. and Mrs. Steven Weinberg *
 Mr. and Mrs. William Weiss
 Ms. Hanna Weiss
 Mr. and Mrs. Richard T. Weldon
 Whole Foods Market Millburn
 Mr. John C. Wiegartner *
 Ms. Marlene E. Wise *
 Mr. and Mrs. Edward J. Wolf *
 Mr. and Mrs. Darryl Wornow *
 Ms. Crystal Wright
 Mr. Scott Wylie
 Mr. Joseph Yelescsis
 Yellow Trans. Teamster
 Mr. and Mrs. Albert Youssef *
 Mr. and Mrs. James B. Zeis *

Children's Miracle Network Sponsors

The mission of Children's Miracle Network is to generate funds and awareness for the benefit of children served by its associated hospitals.

Children's Miracle Network and its sponsors benefit children's hospitals throughout the country. Children's Miracle Network gratefully acknowledges these sponsors for their dedication and generosity.

national sponsors & fund-raising partners

Ace Hardware Corporation
 AFL
 Auntie Anne's
 Blockbuster
 Brooks/Eckerd Pharmacy
 Coca-Cola North America
 Combined Federal Campaign
 CO-OP Financial Services
 Costco
 Credit Unions for Kids
 Crossmark
 Dairy Queen
 Delta Airlines
 Express Personnel Services
 FTD.com
 Foresters
 Golf Galaxy
 Great Clips
 HMS Host
 IHOP
 JoshCo
 Kiwanis & Key Club
 Laidlaw Education Services
 Marriott International
 McLane Company, Inc.
 Miss America Organization
 Money Mailer, LLC
 Outback Steakhouse
 Papa John's International, Inc.
 Panda Restaurant Group, Inc.
 Pathmark
 Phi Delta Epsilon Fraternity
 Phi Kappa Theta
 Phi Mu Fraternity
 PL Developments
 RE/MAX
 Rite Aid Corporation
 Sam's Club
 Sigma Alpha Epsilon Fraternity
 Sigma Chi Fraternity
 Sunoco/Aplus
 The American Legion
 The Hershey Company
 The Walt Disney World Company
 USA Gymnastics
 WaWa
 Wal-Mar
 Zeta Beta Tau

local sponsors & fund-raising partners

100.7 FM WHUD
 Artist Frame Gallery
 AT&T Community Giving Program
 CBS Radio
 Cherry Lane School
 Combined Federal Campaign
 Compass Group
 Happy & Healthy Products
 Hard Rock Cafe, New York
 Headline Promotions
 HMN
 Hospital Media Network
 JPMorgan Chase Foundation
 Matching Gift Program
 Mercedes-Benz Manhattan
 Merrill Lynch Matching Gift Program
 NJ Festival of Ballooning
 NJ 101.5
 NY Football Giants
 Play Ball for Miracles
 Provident Bank
 Quick Chek
 Siemen's Caring Hands Foundation
 Six Flags Great Adventure
 The American Society of Clinical Lab Sciences
 Tiki & Ginny Barber
 United Way
 U.S. News & World Report
 Wachovia Bank
 Washington Mutual

* capital campaign

We gratefully acknowledge InkOne Communications, Inc. for the printing of this year's annual report.

InkOne Communications, Inc.
 1820 Spring Road
 Smyrna, Georgia 30080
 770.434.3058

help give



our children a solid foundation.

Children's Specialized Hospital is the largest pediatric rehabilitation hospital in the United States. Our staff includes some of the most respected, talented and—just as important—caring people in the field. Together, they provide world-class medical, developmental, educational, and rehabilitative services for infants through young adults. Children's Specialized Hospital Foundation funds the programs, services, and expansion of the hospital. It's the only organization of its kind where every dollar donated helps a child with special needs.

Anyone who wants to change the lives of children is welcome to join our family.
To donate, call 1.888.CHILDREN or visit www.childrens-specialized.org.



www.childrens-specialized.org
1.888.CHILDREN

MOUNTAINSIDE * FANWOOD * HAMILTON * NEWARK * NEW BRUNSWICK * ROSELLE PARK * TOMS RIVER